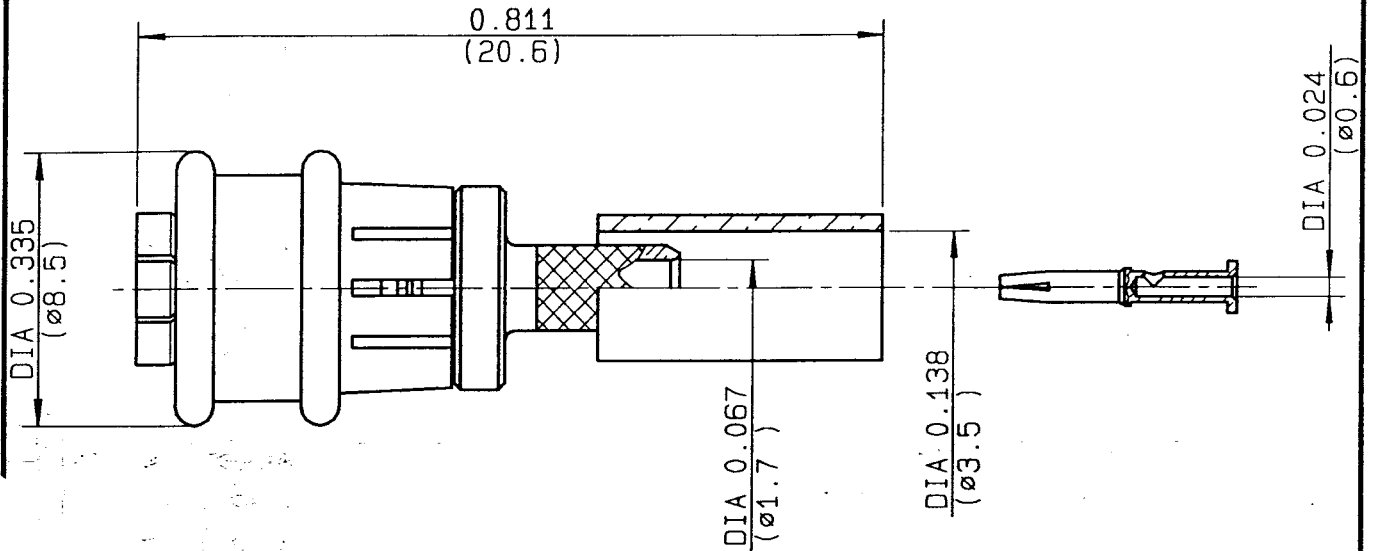


**STRAIGHT PLUG FULL CRIMP TYPE  
CABLE 2.6/50 D-BR**

**R117.083.807**  
SERIES **SMB-LOCK**



NOMINAL IMPEDANCE	50 $\Omega$	CABLES : K022520
FREQUENCY RANGE	0-4 GHz	RD 316
TEMPERATURE RATING	-35/+125 °C	
V.S.W.R	1.25 + .04 x F(GHz)Maxi	
RF INSERTION LOSS	.25 $\sqrt{F}$ (GHz) dB Maxi	
VOLTAGE RATING	335 Veff Maxi	
DIELECTRIC WITHSTANDING VOLTAGE	1000 Veff Mini	
INSULATION RESISTANCE	1000 M $\Omega$ Mini	OTHERS CHARACTERISTICS
HERMETIC SEAL	NA Atm.cm <sup>3</sup> /s	CABLE RETENTION
LEAKAGE (pressurized only)	NA	110 N Mini
MECHANICAL DURABILITY	500 Cycles	CENTER CONTACT RETENTION
WEIGHT	1.9 gr	Axial force - mating end
SPECIFICATION		10 N Mini
		Axial force - opposite end
		NA N Mini
		Torque
		NA cm.N Mini
		RECOMMENDED TORQUES
		Mating
		NA cm.N
		Panel nut
		NA cm.N
		Clamp nut
		NA cm.N

CONNECTOR PARTS	MATERIALS	FINISH	(all values are given ) in micrometers
BODY	BRASS	BBR 2	
OUTER CONTACT	BRONZE	BBR 2	
CENTER CONTACT	BERYLLIUM COPPER	GOLD 0.8 OVER COPPER 0.5	
INSULATOR	PTFE	-	
GASKET	-	-	
OTHERS PIECES	DELFIN (POM)	-	

ISSUE	CREATION DATE	FILE PART-NUMBER
9820A02	08-DEC-97	EPC 97-08



GUERIN

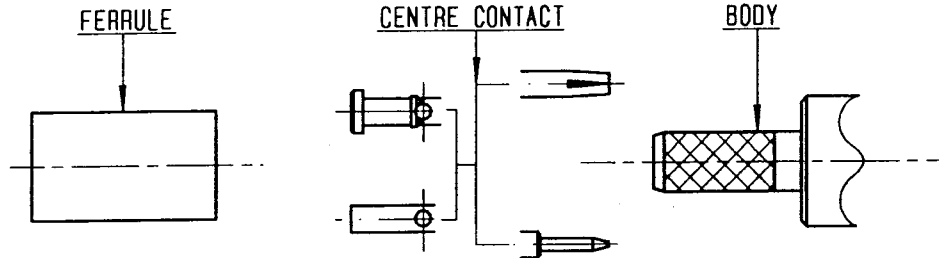
The information given here is subject to change without notice.  
Design changes may be in order to improve the product .

*Connect to the future*

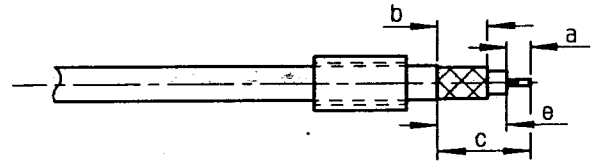


**R117.083.807**

ISSUE 9820A02 SERIES SMB-LOCK

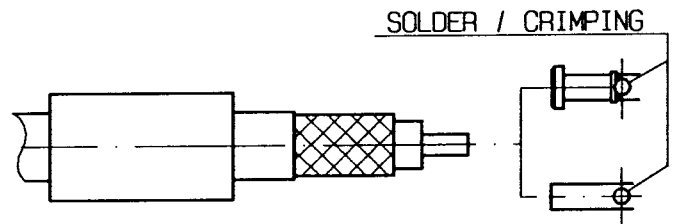


- ① Slide onto the cable the ferrule
- Strip the cable
- 
- 

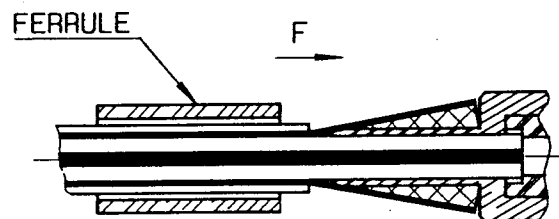


Stripping	a	b	c	d	e
inch	0.098	0.213	0.453	0	0.354
mm	2.5	5.4	11.5		9

- ② Slide on centre contact until it bottoms against cable dielectrique .  
Solder or crimp centre contact .
- CABLE 2.6/50:  
Crimping tool : R282 281 000 ( position 3 )  
+ positionner R282 983 000 or  
crimping tool M22520/2-01 ( position 3 )
- CABLE 2.6/75:  
Crimping tool : R282 281 000 ( position 1 )  
+ positionner R282 983 000 or  
crimping tool M22520/2-01 ( position 1 )



- Fan the braid .
- Slide cable into the body until bottoms against insulator .
- Slide ferrule over the braid .
- (In direction F)



- ④ Crimp the ferrule with crimping tool R 282 271 000 ( Hex. : .151 ) or crimping tool R282 293 000 ( M22520/5-01 ) + dies R282 235 037 ( M22520/5-37 )
- Cut the excess of braid .
- 
- 
- 

